

IEC Appliance Connector C14 with Fuseholder 1-pole

Types 6200, 6205



Snap-In Version or Screw-On Version
1-pole
Type 6202: for protection class II

Types 6200, 6205



1-pole
Snap-In version or Screw-On Version



Description

- Panel Mount:
Screw-on version from front or rear side, snap-in version from front side
- 2 Functions:
Inlet Protection class I, Fuseholder for fuse-links 5 x 20 mm 1-pole
- Solder terminals or quick connect terminals
- Alternative: version with line filter [5200](#)
- Alternative: Fuseholder 2-pole [6220](#)

Approvals

- VDE License Number: 40011091
- UL License Number: E93617
- CSA License Number: 38456

Characteristics

- All single elements are already wired
- Plug removal necessary for fuse-link replacement
The fuseholder is accessible from the equipment front
With spare fuse compartment
- Qualified for use in equipment according IEC/EN 60950

Other versions on request

- Types for rivet mounting available upon request

Weblinks

[Approvals](#), [RoHS](#), [CHINA-RoHS](#), [e-Store](#), [SCHURTER-Stock-Check](#), [Distributor-Stock-Check](#)

Technical Data

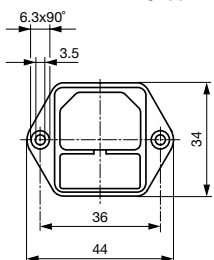
Ratings IEC	10A / 250VAC; 50Hz	Appliance-Inlet/-Outlet	C14 acc. to IEC/EN 60320-1, UL 498, CSA C22.2 no. 42 (for cold conditions) pin-temperature 70 °C, 10A, Protection class I
Ratings UL/CSA	10A / 250VAC; 60Hz	Fuseholder	1 pole, Shocksafe category PC2 acc. to IEC 60127-6, for fuse-links 5 x 20 mm
Dielectric Strength	> 2 kVAC between L-N > 2 kVAC between L/N-PE (1 min/50Hz)	Rated Power Acceptance @ Ta 23 °C	5 x 20: 2W (1 pole)
Allowable Operation Temp.	-25 °C to 70 °C	Power Acceptance @ Ta > 23°C	Admissible power acceptance at higher ambient temperature see derating curves
Degree of Protection	from front side IP 40 acc. to IEC 60529		
Protection Class	Suitable for appliances with protection class I acc. to IEC 61140		
Terminal	Solder terminals or quick connect terminals, tin-plated		
Panel Thickness s	Screw-on: max 6 mm Mounting screw torque max 0.5 Nm Snap-in: 1/1.5/2/2.5/3 mm		
Material: Housing	Thermoplastic, black, UL 94V-0		

Dimensions

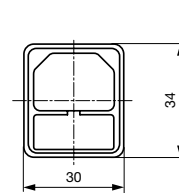
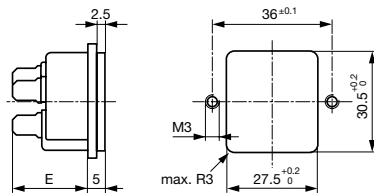
Screw-on mounting types 6200/05

Length | 44 mm

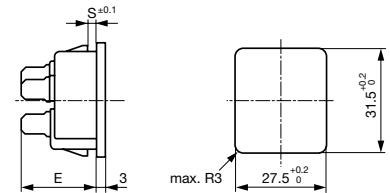
Snap-in mounting types 6200/05



E: solder terminals 20.5 mm
E: quick-connect terminals 23.5 mm

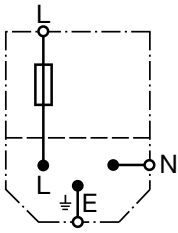


E: solder terminals 22.5 mm
E: quick-connect terminals 25.5 mm
S: 1.0/1.5/2.0/2.5/3.0 mm



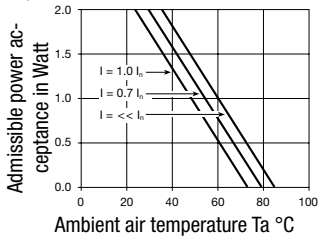
Diagrams

6200/05

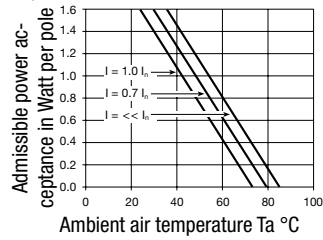


Derating Curves for Fuseholders

1-pole



2-pole



Variants

[Distributor-Stock-Check](#) | [SCHURTER-Stock-Check](#) | [e-Store](#)

Socket and fuse-carrier included

Protection Class	Panel mounting	Panel Thickness s [mm]	Fuseholder	Terminal	internally wired	Order Number
I	Snap-in	1	1 pole	Quick connect terminals 4.8 x 0.8 mm		6200.4210
I	Snap-in	1.5	1 pole	Quick connect terminals 4.8 x 0.8 mm		6200.4215
I	Snap-in	2	1 pole	Quick connect terminals 4.8 x 0.8 mm		6200.4220
I	Snap-in	2.5	1 pole	Quick connect terminals 4.8 x 0.8 mm		6200.4225
I	Snap-in	3	1 pole	Quick connect terminals 4.8 x 0.8 mm		6200.4230
I	Snap-in	1	1 pole	Quick connect terminals 6.3 x 0.8 mm		6200.4310
I	Snap-in	1.5	1 pole	Quick connect terminals 6.3 x 0.8 mm		6200.4315
I	Snap-in	2	1 pole	Quick connect terminals 6.3 x 0.8 mm		6200.4320
I	Snap-in	2.5	1 pole	Quick connect terminals 6.3 x 0.8 mm		6200.4325
I	Snap-in	3	1 pole	Quick connect terminals 6.3 x 0.8 mm		6200.4330
I	Snap-in	1	1 pole	Solder terminals 3.8 x 0.8 mm		6200.4110
I	Snap-in	1.5	1 pole	Solder terminals 3.8 x 0.8 mm		6200.4115
I	Snap-in	2	1 pole	Solder terminals 3.8 x 0.8 mm		6200.4120
I	Snap-in	2.5	1 pole	Solder terminals 3.8 x 0.8 mm		6200.4125
I	Snap-in	3	1 pole	Solder terminals 3.8 x 0.8 mm		6200.4130
I	Screw-on	-	1 pole	Quick connect terminals 4.8 x 0.8 mm		6200.2200
I	Screw-on	-	1 pole	Quick connect terminals 6.3 x 0.8 mm		6200.2300
I	Screw-on	-	1 pole	Solder terminals 3.8 x 0.8 mm		6200.2100

Packaging unit 50 Pcs

Accessory

Description



Assorted Covers
Rear Cover

0859.0047

4311.9403



Cord retaining kits
Cord retaining strain relieve

Flat head, A

4700.0001

Countersunk, B

4700.0002